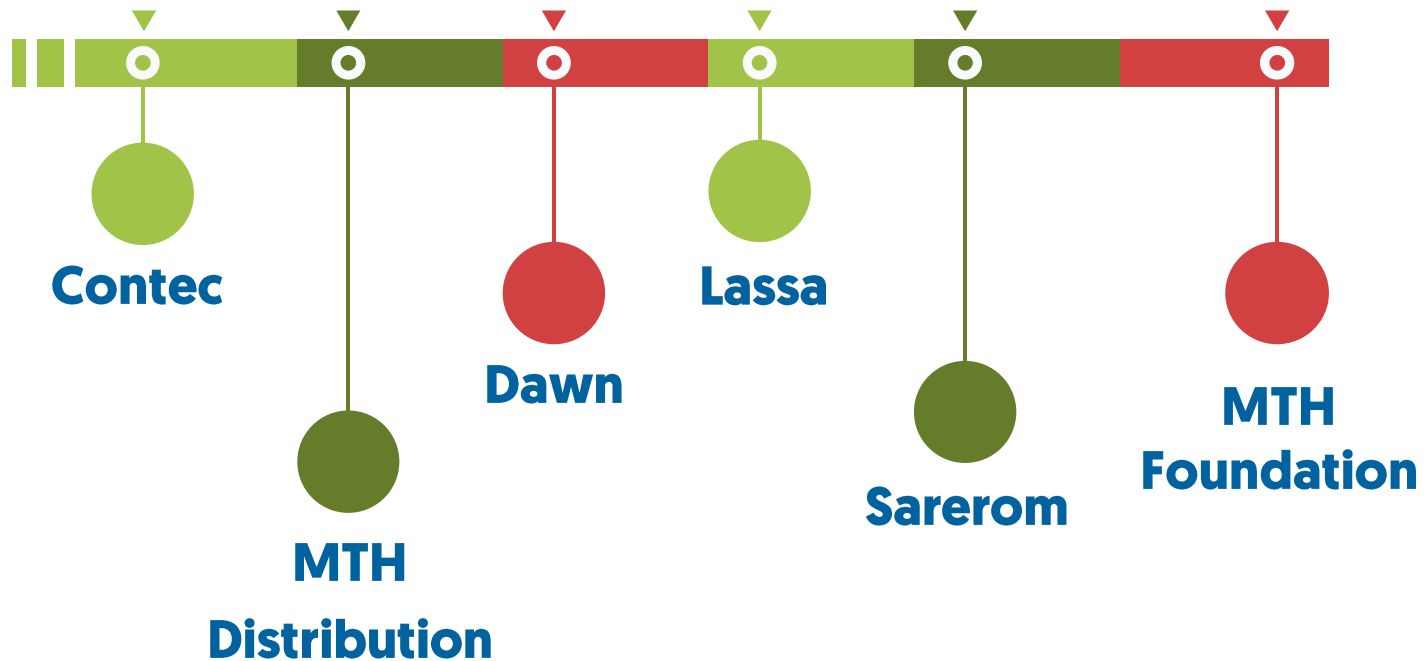




*Lea mai mare fabrica de conserve
din Romania!*





HISTORY

CONTEC (formerly I.P.I.L.F. Tecuci), was constructed between 1952-1956, modernized in 1974 (with the agricultural sector), then rebuilt continuously (by assembling new technological lines).

The factory and the facilities were purchased by Mr. Atin Levent and Suliman Aifun, and renamed S.C. CONTEC FOODS S.R.L., based in Afumati, Ilfov.



MISSION

CONTEC FOODS is a manufacturer of canned and other healthy foods, of the **highest quality at affordable prices**, while taking into account social responsibilities and respecting the environment.



VISION

CONTEC FOODS aims to reach the top of the international canned food producers and other food products and aims to **ensure the continuity to be the first choice of consumers** through the quality of products.



RESOURCES

AREA

172.462 m²



CLOSED AREA

60.000 m²



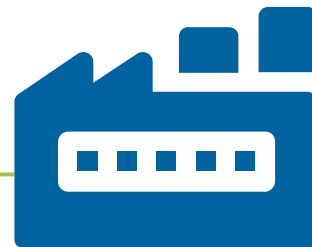
EMPLOYEES

525



WAREHOUSE

13.717 m²



PRODUCTION LINES

SAUCES LINE

**TOMATO
DERIVATES LINE**

**CANNED
VEGETABLES
LINE**

**READY MEALS
LINE**

**CONFECTIONARY
LINE**

**FERMENTATION
LINE**

SORTING LINE

**FROZEN LINE
(IQF)**



PRODUCTION CAPACITY

VEGETABLES

Tomato Paste
300 tonnes/day

Zacusca de vinete
20 tonnes/day

Peas
70 tonnes/day

SAUCES

Ketchup
1000 tonnes/month

Mayonnaise
1000 tonnes/month

Mustard
1000 tonnes/month

BOTTLING

Bors
1500 tonnes/month

Vinegar
2000 tonnes/month



SAUCES LINE

60 sortiments with a total quantity of **9300 tonnes**



SAUCES LINE

Main products are:

- **Sos Glenn (KFC Sauce)**
- **Mustard**
- **Ketchup**
- **Mayonnaise**
- **Garlic Sauce**



TOMATO PASTE LINE

20 sortiments with
a total yearly
quantity of **8700
tonnes**



TOMATO PASTE LINE

Main products are:

- **Tomato paste 28% BRX**
- **Tomato paste 24% BRX**
- **Tomato Juice**
- **Passata**



VEGETABLES LINE

60 sortiments with a total yearly quantity of **9400 tonnes**



VEGETABLES LINE

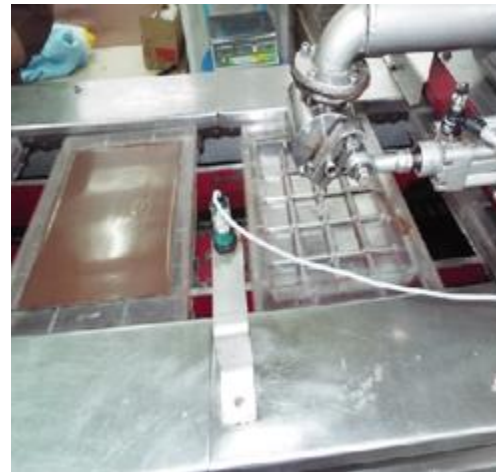
Principalele produse sunt:

- **Peas**
- **Zacusta de vinete (Spread)**
- **Beans**
- **Tocana de legume (Spread)**



CONFECTIONARY LINE

7 assortments with a total yearly quantity of **500 tonnes**



CONFECTIONARY LINE

Main products are:

- **Toppings**
- **Cocoa Cream**
- **Chocolate cream**



BOTTLING LINE

4 sortiments with a total yearly quantity of **13.000 tonnes**



BOTTLING LINE

Main products are:

- **Bors 1L**
- **Vinegar 1L**
- **Apple Vinegar 0.5L**



WAREHOUSE

Warehouse has a total area of **12.717 mp** and has the capacity of **10.000 de palets**



TOTAL PRODUCTION 2018

**55 000
tonnes**



RAW MATERIALS

PROCESSED

Eggplants

**18.000
tonnes**

Onions

500 tonnes

Tomatoes

8.000 tonnes

Carrots

400 tonnes

Peppers

1.000 tonnes



AUDITS

The factory is certified in accordance with the standards of **ISO 22000, SA 8000, ISO 9001 and IFS 6.1**, for each of them annually supporting [third party] certification or supervisory audits (as the case may be).

Also, the factory goes under periodical audits by our long-term clients, such as: **KFC, Kaufland, Lidl, Penny, McDonald's, Carrefour, Cora, Mega Image, Profi, Metro**, etc.



PRIVATE LABEL

Contec Foods and its continuous success in **maintaining high quality standards** for its own brands, creates an important **sense of reliability** for potential clients who wish to develop product lines under their own brands.

Currently Contec Foods produces under the brands of many multinational and local companies such as **Carrefour, KFC, Mega Image, Metro, Spartan and Kaufland**.



BRANDS

CONTEC



WINMARK



METRO



CARREFOUR



MEGA IMAGE



OLYMPIA



KFC



QUALITY CONTROL AND PRODUCTION

We check every step of the production process under the guidance of our **quality inspectors and laboratories**.

The unit has a laboratory equipped with state-of-the-art equipment, intended for **organoleptic, physical, chemical analysis** and thus guaranteeing a final product delivered to the customer in a perfect form and respecting European and national standards and regulations.

In order to maintain the quality and the freshness of our peas, we assure the **delivery** of the raw materials from the farm in under **45 minutes** and **process** them in under **15 minutes**.



QUALITY CONTROL AND PRODUCTION



Certificate obtained in 2014

Current status:
IFS 6.1 2020 (International Foods Standard)



QUALITY CONTROL AND PRODUCTION



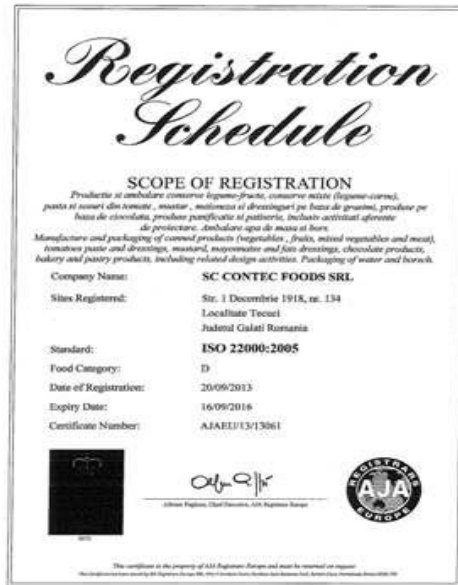
Certificate obtained in 2010

ISO 9001:2008

It sets the criteria for a quality management system and is the only standard in this family that can be certified.



QUALITY CONTROL AND PRODUCTION



Certificate obtained in 2010

ISO 22000:2005

Specifies the requirements for a food safety management system where a food chain organization needs to demonstrate its ability to control food safety risks, to ensure that food is safe for human consumption.



QUALITY CONTROL AND PRODUCTION

HACCP

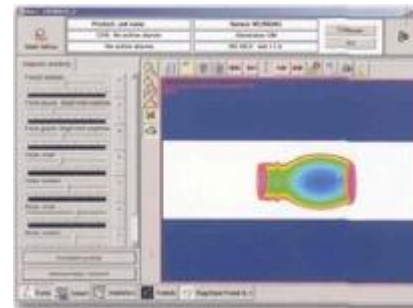
- Risk analysis and critical control point.
- Food production, storage, monitoring and distribution system for the identification and control of associated health risks.
- The HACCP system can be used in all stages of a food chain, from food production and preparation processes, including packaging, distribution, etc.



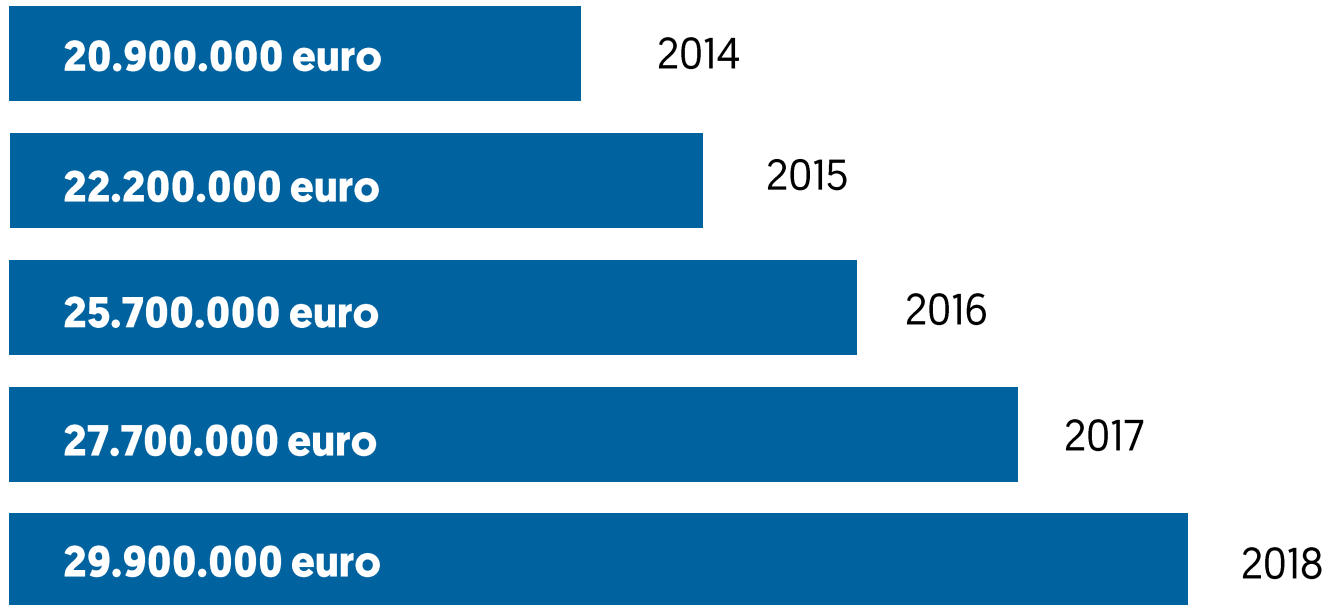
QUALITY CONTROL AND PRODUCTION

With the help of the **X-ray scanners** we can detect any foreign body inside a glass container, reducing to **0 the chances of non-uniformity** in our product.

Based on color, shape, or other optical properties, **nonconforming products** and foreign materials are identified and thus **separated from production flow**.



SALES PERFORMANCE



EXPORT



Total export 2018
5.500.000 Euro



EMPLOYEE TRAININGS

In order to have a team of professionals, we have offered our staff several specialization courses:

Numele Institutiei	Numele Cursului	Numar Persoane
Bioterra Univ. Bucuresti	Prepararea conservelor din legume si fructe	300
RomConserv Bucuresti	Prepararea conservelor din fructe, legume carne si peste	300
DSP Galati	Curs de Igiena Fundamentala	140
S.C. Andivirac S.R.L. Galati	Curs de Responsabil de Mediu	2
European Integration Muntenia	Curs Responsabil ISCIR	1



CONTEC FOODS FARM

- Contec Foods Farm covers an area of **135 hectares** and is located in Ungureni, 20km away from Tecuci.
- **A team of horticultural engineers** is permanently present on site to ensure a qualitative and quantitative production.



CONTEC FOODS FARM

At the moment the farm has more than 50.000 trees planted

APPLE



SWEET CHERRIES



CHERRIES



PLUMS





ABOUT MARATHON

- **Founded in 1991** as a local logistics company by Mr. Levent Atin and Mr. Aifun Suliman.
- Marathon Distribution group is the **current exclusive distributor** of Contec Foods in Romania for Contec Foods brands.
- At the moment Marathon is operating on a national level with over **20.000 sales points** and a total **turnover of 120.000.000 EURO/year (2019)**.
- The company operates under 4 main divisions: **HORECA, Modern Trade, Traditional Trade and Bakery&Confectionary**



WAREHOUSES

Marathon covers the entire
Romanian soil with **16**
warehouses across the country



LOGISTICS

Marathon has its own fleet with:

- **300 cars for the sales teams**
- **150 vans (capacity 3.5 tonnes)**
- **20 trucks (capacity of 7.5 tonnes)**
- **7 trucks (capacity of 18 tonnes)**
- **10 trucks (capacity of 20 tonnes)**



MODERN RETAIL

We have been collaborating with international retailers such as:

- **Auchan**
- **Metro**
- **Selgros**
- **Carrefour**
- **Kaufland**
- **Cora**
- **Lidl**
- **Profi**
- **Rewe Group**
- **Mega Image (Delhaize Group)**



HORECA

Marathon is the only company with a HORECA team that has the capability to serve nationally.

Over 5.000 sales points including international chains such as:

- **Starbucks**
- **KFC**
- **McDonald's**
- **Gloria Jeans Coffee**
- **Marriot**
- **Hilton**
- **Radisson Blu**





SOCIAL RESPONSABILITY





MARATHON FOUNDATION

- The foundation was born at the initiative of Mr. Atin Levent and Suliman Aifun who aimed to contribute to **improving the humanitarian situation of disadvantaged groups.**
- The Marathon Charity Association is an independent, non-governmental, apolitical organization that was **founded in 2009.**



MARATHON FOUNDATION

The foundation provides **free hot meals 6 days a week** to those people who do not have the financial resources to support themselves.

We host almost **600 people daily** at the foundation.



MARATHON FOUNDATION



The Marathon Charity Association aims to collaborate with organizations and individuals or legal entities in the country and abroad who want to support the association and, therefore, to help improve the situation of those who do not have sufficient financial resources.



MARATHON FOUNDATION

The financing of the foundation is ensured by the main **sponsors** **Marathon Distribution Group SRL** and **SC Contec Foods SRL**, as well as other companies and individuals who support us in this social project.





FONDATORI



SPONSORI



ANGAJAȚII



ANGAJAȚII



ANGAJAȚII



THANK YOU!

